



MANN
EXPORT



MANUFACTURER &
EXPORTER OF
**ALL KIND OF
COMPONENTS**



आत्मनिर्भर
भारत

ISO 9001:2015 CERTIFIED
COMPANY



ABOUT US

Mann Export Is A Trusted Name In The Field Of Brass,steel copper and aluminum Products, Having Years Of Experience For Continuous Development Of New Products For Various Applications For International And Domestic Market. We Are Engaged In Manufacturing And Export Of High Quality Brass, Copper, Aluminum Products For Various Industries.

The Unit Is Located In Rajkot In State Of Gujarat. We Have Sufficient Infrastructure And Venture To Shape New Ideas And Visions.

Best Quality Products And Satisfaction Of Our Customer Is Our Hallmark. We Maintain It By Time Bound Schedule With The Sole Aim To Seek Maximum Support And Ensure Utmost Satisfaction Of Our Customers. We Undertake Innovations To Enrich The Huge Field Of International Market. We Strongly Believe To Supply Our Quality Products With International Standard At Competitive Price With Committed Delivery Schedule.

To find the best export Solution for the customer's particular requirement which results into the creation of long standing commercial relationships built on mutual trust and understanding. Our mission is to work continuously towards providing excellence to our clients. For over a decade, we have been working as prime suppliers to our esteemed client base. We aim to achieve the growth a step forward each time.

MISSION VISION

Delivering a practical and tailored solution to complex problems, we even push the boundaries of the traditional and modern methods of engineering, creating new standards to provide better resolution to client's needs. Our workforce is highly capable to realize the client's visions and creating new approaches to fulfill those visions. In doing so we have envisaged our company's future.



QUALITY

Standards Of Products

We Are Committed To Providing Our Clients With The Highest Quality Products, Adhering To The Requirements Of Our Iso 9001:2015 Certified Quality Management System. Our Quality Processes And Data Are Regularly Audited By External Auditors And By Our Clients To Ensure Compliance And Continuous Improvement.

This Version Emphasizes Your Dedication To Quality And Compliance While Making The Message Clear And Concise.

We can make the products as per different International standards and specification i.e. as per ISO or NSB's - ANSI, DIN, JISC, BIS, NEN, SAC, SCC, SIS, SN, IS, SNV, SNZ, SABS, ABNT, DGN, IRAM and KATS.

Inspection & Testing Method

We do - Raw-Materials Test, On-line Inspection by our Technicians team, 100% Visual Inspection, Final Inspection and Tests of products as per our written and approved Quality Management System of ISO 9001:2008. Our 'Inspection Reports' are forward to the clients for their good reference regularly, if instructed.

Environmental Norms

Complied norms: RoHS 2002/95/EEC Directives. Specified Elements as per RoHS in our components are within limit only. No 'Substance of Very High Concern' is used by us, in our products or packing materials. We tried to use recyclable (Eco-friendly) materials.

Type Of Boxes Outer Packing

Packaging and labeling are done as per client's requirement. Packing is done as per customer's choice either in Corrugated Cartons or in Wooden Boxes. Proper protection from moisture, allowed weight of carton, Allowed Size of carton/boxes and other safety measures are followed as per International norms / EU norms / Importing countries norms.

Corrugated Boxes are well sealed with Poly material. Wooden Boxes complied with 'ISPM' as regulated by 'IPPC'. ISPM is Regulation of Wood Packaging Material in International Trade. Wooden Boxes are inspected and certified from authorized agencies only. Labels for instructions are used. Declaration in document is passing to clients. Palletized cartons are loaded into container, Palletization of carton is done to follow the importing countries norms or at the choice of Customer.

List Of Testing Calibrated Equipments

- Impact Test Equipment
- Cooling Chamber
- Coating Thickness Gauge
- Digital Vernier Calipers & Micrometers
- Hardness Tester
- Vernier Calipers
- Vision Measuring System / Profile Projector
- Thread Plug Gauges
- Tensile Strength Tester
- Thread Go-No-Go Gauges Of Various Sizes
- Ring Gauges
- Micron (plating) Testing
- Spectrometer
- Snap gauges for specific products
- Profile Projector
- Height Gauge



BRASS
ELECTRICALS
PARTS | **PAGE
10**

BRASS
NEUTRAL LINKS &
BRASS INSERTS | **PAGE
11**

BRASS
CNC TURNED
COMPONENTS | **PAGE
12**

BRASS
FASTENERS | **PAGE
13**

BRASS
FITTINGS | **PAGE
14**

BRASS BATTERY
TERMINALS &
BRASS BUSHING | **PAGE
15**

BRASS AUTO
PARTS & BRASS
FORGING PARTS | **PAGE
16**

BRASS SHEET
METAL
COMPONENTS &
ALUMINUM
COMPONENTS | **PAGE
17**

STAINLESS
STEEL
COMPONENTS &
COPPER
COMPONENTS | **PAGE
18**

MS
FASTENERS | **PAGE
19**

INDEX

www.mannexport.com

**BRASS
ELECTRICALS
PARTS**



Mann Export Provides A Large Range Of Brass Electrical Parts And Brass Electrical Components For Different Industries Include Several Top Brands. The Offered Range Of Parts Is Manufactured By Our Professionals Using Optimum Quality Brass And Latest Machinery. We Ensure That All Our Components Are Delivered At The Customer's End Within The Stipulated Time-frame.



**BRASS
NEUTRALS
LINKS**



We offer a wide range of Brass Neutral Link Bars, Neutral Earth Bars and Brass Terminal Blocks in different sizes for electrical, electronics and telecommunication industrial requirements. You can get precision quality products with reasonable price and great service. We manufacture Neutral Link- Bar and Earthing Terminals as per international standards and tolerances.

**BRASS
INSERTS**



Inserts for plastics Industries, Communication equipments, Automotive Industries, Electrical & Wiring Device Cases etc. We offer a full line of brass inserts for all methods of installation, including: ultrasonic, heat, thermal, press-in and mold-in. We manufacture an impeccable range of brass male and female inserts to be used as brass CPVC/UPVC/PPR fittings. Our Brass CPVC/UPVC/PPR fittings are manufactured using the best quality brass.



**BRASS CNC
TURNED
COMPONENTS**



The CNC machined components manufactured are always checked for quality with various gauges and sophisticated instruments. It involves turning on CNC and drilling on VMC. It undergoes special process of nickel plating and on turning special lip shaped profile is made at a high depth using world class specialized tooling. The different sizes of bore are made having close tolerances that are controlled by our effective quality systems.



**BRASS
FASTENERS**



Mann Exports is one of the very famous manufacturers & exporters of all kinds of Fasteners. For example, Automotive Fasteners, Brass Fasteners, Industrial Fasteners, Bronze Fasteners, Copper Fasteners, Aluminum Fasteners & MS Fasteners, Steel Fasteners, etc. Furthermore, fasteners are objects that allow for two or more elements to be 'joined together'.



BRASS FITTINGS



At Mann Export, we believe in three things: producing quality products, having competitive prices, and providing exceptional customer service. As a global supplier and leading manufacturer of brass fittings that are plumbing necessities, we make sure that every product that leaves our doors are up to the highest industry standards.



BRASS BATTERY TERMINALS



Brass Battery terminals are mainly used for connecting batteries in auto industry and Inverter batteries. We take due care that terminal are not rough and don't have any sharp edges, to make sure the wires are not damaged while installing. Angle Type, Strip Type, Lucas Type & Marine Type brass battery terminals are the four basic types. Our product range are Heavy, Medium & Small variants in Angle & Strip type where as in Lucas type the sizes are coming as customer's requirement.

BRASS BUSHING



We have successfully made a credible impact in the market by manufacturing and supplying an exclusive range of Brass Bushing. We use high quality brass procured from the authentic vendors to manufactures these bushings. To offer a defect free range to the clients, we check the Brass Bushing on durability and strength parameters. We can customize these products as per the clients requirements.



BRASS AUTO PARTS



We are committed to manufacturing optimum quality and a wide range of Brass Auto Parts as per custom specifications. Our brass auto parts are commonly used for different automobile and automotive applications. Our experts make sure that our products suit perfectly to your complex project requirements. The Auto Parts are made of superior grade brass and other raw material in different sizes and range to meet the exact demand of our customers.

BRASS FORGING PARTS



We are Manufacturer, Exporter and Wholesales Supplier of Brass Forged Components. We shall be happy to offer you a complete forged component supply to your specification. We offer Brass forged nuts, Brass forged hose nipples, Brass forged tees, Brass forged elbows, Brass forged flare fittings, Brass forged gas fittings, Brass forged components forged Fittings etc.



BRASS SHEET METAL COMPONENTS



We offering you a complete choice of products which include sheet metal component. Our offered sheet metals components are provided in numerous sizes & finishes according to the needs of customers. Further, being easy to maintain and user friendly, these are highly appreciated in the market. Driven by technically advanced facilities at our ultra-modern manufacturing unit, we are presenting an extensive range of Brass Sheet Metal Components.

ALUMINUM COMPONENTS



Aluminum Parts are used in the automobile, electrical, electronics, mechanical, telecom and plastic industries. Before the last dispatch, a pool of quality machineries strictly inspects these products against diverse parameters of quality. Owing to their high corrosion resistance and optimum finish, Aluminum Components are widely demanded in the market.



STAINLESS STEEL COMPONENTS



We are prominent manufacturer and supplier of the finest quality assortment of Stainless Steel Components. These steel components are highly used in the fitting of automotive parts, electronic machines, doors, for connecting two or more work piece together, Diesel Engine, Textile Machine and Various Industries. The offered steel components are checked on different parameters in order to ensure its flawlessness

COPPER COMPONENTS



The company has a very modern plant with Injection Moulding machines, dry pressing, extrusion, slip casting and machining. The components are made by using one or more of the processes to ensure net shape parts in the green stage itself. Small complex shaped components are manufactured by Injection Moulding. The company has developed its own feedstock to ensure high quality with cost effectiveness



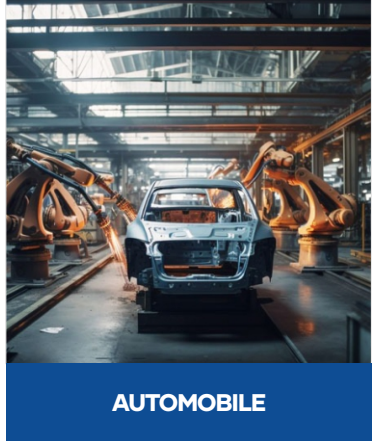
MS FASTENERS



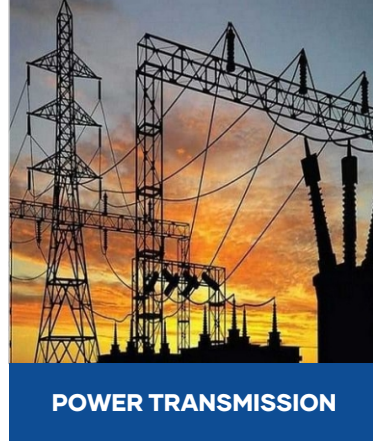
We offering you a complete choice of products which include sheet metal component. Our offered sheet metals components are provided in numerous sizes & finishes according to the needs of customers. Further, being easy to maintain and user friendly, these are highly appreciated in the market. Driven by technically advanced facilities at our ultra-modern manufacturing unit, we are presenting an extensive range of Brass Sheet Metal Components.



INDUSTRIES WE SERVED



AUTOMOBILE



POWER TRANSMISSION



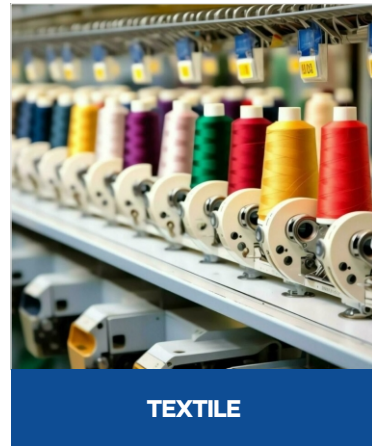
POWER PLANT



MARINE



CHEMICAL



TEXTILE



GLOBAL EXPORTER

- AMERICA
- GERMANY
- FRANCE
- UAE
- AUSTRALIA
- SPAIN
- ITALY



www.mannexport.com

Our product also comply with the EU RoHS 2002/95/EEC Directive.



ISO 9001:2015 CERTIFIED COMPANY



Plot No. 34/2, Geet Gujri Society, Main Road, Airport Road, Rajkot-360001, Gujarat, India.

+91 79902 89837
+91 81287 77771



info@mannexport.com

www.mannexport.com